



**Phylogenetic Relationships of Species of the Genus *Brachyrhaphis* (Poeciliidae)
Inferred from Partial Mitochondrial DNA Sequences**

Camille L. Mojica; Axel Meyer; George W. Barlow

Copeia, Vol. 1997, No. 2. (May 13, 1997), pp. 298-305.

Stable URL:

<http://links.jstor.org/sici?sici=0045-8511%2819970513%293%3A1997%3A2%3C298%3APROSOT%3E2.0.CO%3B2-V>

Copeia is currently published by American Society of Ichthyologists and Herpetologists.

Your use of the JSTOR archive indicates your acceptance of JSTOR's Terms and Conditions of Use, available at <http://www.jstor.org/about/terms.html>. JSTOR's Terms and Conditions of Use provides, in part, that unless you have obtained prior permission, you may not download an entire issue of a journal or multiple copies of articles, and you may use content in the JSTOR archive only for your personal, non-commercial use.

Please contact the publisher regarding any further use of this work. Publisher contact information may be obtained at <http://www.jstor.org/journals/asih.html>.

Each copy of any part of a JSTOR transmission must contain the same copyright notice that appears on the screen or printed page of such transmission.

The JSTOR Archive is a trusted digital repository providing for long-term preservation and access to leading academic journals and scholarly literature from around the world. The Archive is supported by libraries, scholarly societies, publishers, and foundations. It is an initiative of JSTOR, a not-for-profit organization with a mission to help the scholarly community take advantage of advances in technology. For more information regarding JSTOR, please contact support@jstor.org.

Phylogenetic Relationships of Species of the Genus *Brachyrhaphis* (Poeciliidae) Inferred from Partial Mitochondrial DNA Sequences

CAMILLE L. MOJICA, AXEL MEYER, AND GEORGE W. BARLOW

Phylogenetic relationships were reconstructed using partial mitochondrial DNA sequence data for the cytochrome *b* gene among all nine described species of *Brachyrhaphis* and several members of the tribe Gambusiini. We included three of the more than 40 members of the genus *Gambusia* and *Belonesox belizanus*, the third, monotypic genus of the tribe Gambusiini. *Xiphophorus malinche* served as the out-group. Phylogenetic trees were generated using maximum-parsimony, maximum-likelihood, and neighbor-joining analyses. Hypotheses of relationships within the tribe and genus *Brachyrhaphis* made by previous authors were tested. The existence of a slim- and a deep-bodied clade within the monophyletic genus *Brachyrhaphis* was supported. *Brachyrhaphis hartwegi* is the basal member of the deep-bodied clade, whereas *B. punctifer* is the basal member of the slim-bodied clade.

SPECIES of the genus *Brachyrhaphis* are found in freshwater streams, rivers, and swamps of Central America. The geographic distribution of *Brachyrhaphis* is disjunct; seven of the eight species are found in Costa Rica and Panama, whereas the eighth species, *B. hartwegi*, is found in Guatemala (Rosen and Bailey, 1963). These fishes are found at the shallow edges of bodies of water where they are able to feed on terrestrial insects that fall into the water (Bussing, 1988). The geographic ranges of individual species may overlap, but segregation seems to occur both by microhabitat and elevation. When found in the same area, one species usually occupies open streams, whereas the other inhabits swamps or backwater areas. Similarly, one species may replace another with increasing elevation in a given drainage.

Male poeciliid fishes are well known for their sexually dimorphic traits; these usually involve unique color patterns and elaborate morphology. Sex-specific differences range from vertical bars (Morris et al., 1995) and elongated "swords" (Basolo, 1995) to elaborate coloration in male guppies, *Poecilia reticulata* (Houde and Endler, 1990). Compelling evidence indicates that these traits have evolved via sexual selection (Houde and Endler, 1990; Endler, 1995). But in the genus *Brachyrhaphis* (and some *Gambusia*, e.g., *G. sexradiata*), these traits are found in both the males and females, making sexual selection via female choice unlikely explanations for the evolution of the female traits.

The novel morphology possessed by both sexes varies dramatically from the colorless and typical anal fin or gonopodium of *Brachyrhaphis hartwegi*, to the largely black anal fin/gonopodium of *B. rhabdophora*. Ornamentation of both male gonopodia and female anal fins are a

unique condition within the family. Anal fins of females of some species are as colorful as the male gonopodia. Additionally, the black pigment is placed in such a way in the females of certain species that it traces the first three rays of the anal fin from their origin to the tip. This highlighted, lengthened region is about the same width as a male gonopodium. The fourth ray is lengthened in some species relative to the last rays of the anal fin, giving the fin a falcate shape.

The result of this combination of unique color patterns and morphology possessed by these females is that the anal fins bear a striking resemblance to the gonopodia of males of their own species. Both males and females use these fins during social interactions. The black area appears to change in intensity depending on social status (pers. obs.). This suggests that these structures function in social communication. The hypothesis, then, is that selection for communication has produced elaborate, colorful female anal fins that mimic the gonopodia of males. A phylogenetic tree is necessary to test this hypothesis because we will want to compare closely related species that vary in the expression of derived traits (Brooks and McLennan, 1991). Such a comparative study requires a phylogeny if it is to accommodate the potential nonindependence among data points. The morphology and color patterns will be more thoroughly described, and hypotheses concerning the adaptive significance of these traits will be tested elsewhere (CLM, unpubl.) using the phylogeny constructed here.

This investigation used mitochondrial DNA sequence data to resolve the phylogenetic relationships of the taxa mentioned. Such data have proven to be phylogenetically informative in

many taxa (Meyer, 1994). Sequence data from the cytochrome *b* gene have been particularly useful in resolving poeciliid systematics (Meyer and Lydeard, 1993; Lockhart et al., 1995; Lydeard et al., 1995).

Taxonomy.—Regan (1913) described the monotypic genus *Brachyrhaphis* (*B. rhabdophora*) based on the possession of a shorter gonopodium than that of *Gambusia*. The most thorough systematic study to date of the genus was based on morphology and is part of the revision of the family Poeciliidae by Rosen and Bailey (1963). They used similarities in male gonopodia to designate species. They included in the genus *Brachyrhaphis* several species formerly assigned to *Gambusia* (*G. cascajalensis*, [Meek and Hildebrand, 1913]; *G. episcopi* [Steindachner, 1878]; *G. parismina* [Meek, 1912]; *G. rhabdophora*, Regan, 1908; *G. terrabensis*, Regan, 1907b). They also added *B. punctifer* (*Trigonophallus punctifer* [Hubbs, 1926]) to the genus and described *B. hartwegi*, a new species. Bussing later described two additional species to the genus (*B. holdridgei*, 1966, and *B. roseni*, 1988).

Rosen and Bailey (1963) stated that a "particularly close relationship" between *B. hartwegi* and *B. terrabensis* existed based on the possession of a "bean-shaped fleshy pad near the tip of the first pelvic ray." Other close relationships were hypothesized when certain species (*B. episcopi* and *B. terrabensis*) were referred to as deep-bodied species and others (*B. hartwegi*, *B. cascajalensis*, and *B. parismina*) as slender-bodied species. They stated that *B. cascajalensis* "is most closely related to *B. parismina*."

The classification based on body depth was not used consistently, however, because they also referred to *B. hartwegi* as a slender-bodied species even though it was presumed to be closely related to the deep-bodied *B. terrabensis*. Having seen live specimens of every species, we describe *B. hartwegi* as a deep-bodied species. Rosen and Bailey (1963) did not discuss body depth when treating *B. rhabdophora* or *B. punctifer*, but we describe the former as a deep-bodied fish and the latter as a slender-bodied species. *Brachyrhaphis holdridgei* and *B. roseni* had not been described when Rosen and Bailey (1963) made their revisions. We believe both of these to be deep-bodied as well. An informal comparison of the body-depth data given in the original descriptions of all *Brachyrhaphis* species supports these ideas (unpubl. data).

Bussing (1988) hypothesized a close relationship between *B. roseni* and *B. rhabdophora*. Additionally, he included *B. cascajalensis* in *B. parismina* without providing an analysis of data to

support this combination: "With the exception of *B. parismina* (including *B. cascajalensis*) the species of the genus also have a pattern of vertical black bars . . ." (Bussing, 1988:81).

Brachyrhaphis holdridgei, *B. roseni*, *B. rhabdophora*, and *B. punctifer* resemble the deep-bodied *B. episcopi* and *B. terrabensis* in body depth and color pattern. All have black, orange, yellow, and/or red pigments accentuating their fins; olivaceous bodies; and vertical bars along the flank. *Brachyrhaphis cascajalensis* and *B. parismina* lack these pigments, whereas *B. hartwegi* is yellow throughout.

Bussing (1988) stated that, when examining specimens of *B. rhabdophora*, he found additional differences between those occurring in northern Costa Rica and those in the south. The geographic boundaries thought to delimit the northern forms include Guanacaste and the Tarcoles drainage in central Costa Rica. The southern form is distributed from Punta Mala on the Nicoya Peninsula down to the Terraba drainage, where it is replaced by *B. roseni* (W. A. Bussing, pers. comm.). Bussing does not comment on whether these species are each others' closest relatives.

Eight species currently make up the genus *Brachyrhaphis* that is part of the tribe Gambusiini. Members of the tribe also include the genus *Gambusia*, which contains more than 40 described species and the monotypic genus *Belonesox*. With respect to the tribe, Rosen and Bailey (1963) stated that *Gambusia* and *Belonesox* are most closely related to one another and that a form resembling *B. cascajalensis* gave rise to the ancestor of these two genera. The tribe was revised by Rauchenberger (1989). Her cladistic analysis of morphological data supported the previous notion that *Gambusia* and *Belonesox* are sister taxa.

Hypothesis testing.—The purpose of this study is to elucidate the relationships within the genus *Brachyrhaphis* and within the tribe Gambusiini so that the resultant phylogenetic tree can be used in addressing the evolution of novel morphology and behavior patterns. In producing a phylogenetic tree, we tested the hypotheses put forth or implied by previous investigators. These include the following: (1) *Brachyrhaphis* is a monophyletic genus with respect to other gambusiin fishes (Rauchenberger, 1989); (2) a deep-bodied clade consists of *B. episcopi*, *B. holdridgei*, *B. rhabdophora*, and *B. terrabensis* (Rosen and Bailey, 1963); (3) *B. hartwegi* and *B. terrabensis* are closely related (Rosen and Bailey, 1963); (4) *B. cascajalensis* and *B. parismina* comprise a slim-bodied clade, and/or the two latter

described forms represent one species (Rosen and Bailey, 1963; Bussing, 1988); (5) *B. holdridg-ei* is more closely related to the slim-bodied clade than to the other species of the genus (Bussing, 1966); and (6) what is currently *B. rhabdophora* is a paraphyletic group of species (Bussing, 1988).

The last hypothesis refers to Bussing's assertion that *B. rhabdophora* should be split along geographic boundaries. This study cannot establish the existence of two species. Bussing's hypothesis can be supported, however, if the populations are found to be paraphyletic. This study will be inconclusive with respect to this hypothesis if monophyly is the result. Partial mitochondrial DNA sequences for the mitochondrial cytochrome *b* gene were used in a phylogenetic analysis to construct a tree with which to test this and the other six hypotheses.

MATERIALS AND METHODS

Specimens.—All specimens of *Brachyrhaphis* were collected in the field or obtained from other collectors and sequenced by CLM. At least one individual per species was sequenced. Additional sequences from two species were acquired to reveal inter- and intrapopulation variation. Data from three individual *B. episcopi* were gathered: two from the same population (Barro Colorado Island, Panama) and one from a second population (Rio Mendoza, Pipeline Road, Panama). This study also included three representatives from the geographic range of *B. rhabdophora*: a northern type from the Rio Tenorio (Rio Bebedero Drainage, Guanacaste Province, Costa Rica); a central form from Santa Ana (San Jose Province, Costa Rica); and a southern type from the Rio Angel (near San Isidro del General, San Jose Province, Costa Rica). The three specimens of *Gambusia* and one *Belonesox* were obtained and sequenced in AM's laboratory (Meyer and Lydeard, 1993; Lydeard et al., 1995). Voucher specimens of *Brachyrhaphis* were deposited at the California Academy of Sciences.

Sequence collection.—Conventional methods were used to obtain 12 of the 17 sequences via manual sequencing from a 350-base-pair (bp) region of the cytochrome *b* gene of the mitochondrial genome (Kocher et al., 1989; Walsh et al., 1991; Smith and Patton, 1993). Five sequences were obtained via automated sequencing (Lydeard et al., 1995). Double-stranded products for five of the specimens (*B. episcopi* [B2], *B. rhabdophora* [S], *Gambusia affinis*, *G. nicaraguensis*, *Belonesox belizanus*, and *Xiphophorus malinche*) were used to acquire sequences via standard au-

tomated sequencing protocols. The sequences obtained were deposited in GenBank.

Phylogenetic analysis.—All sequences were entered into PAUP, Vers. 3.1.1 for the Macintosh (Swofford, 1991, unpubl.), and aligned by eye. This program was used to perform a phylogenetic analysis using the principle of maximum parsimony (MP). The weighting scheme applied to the data followed the suggestions made by Meyer (1994) in his evaluation of cytochrome *b* as a molecular marker.

The shortest tree was found in a heuristic search with tree bisection-reconnection (TBR) branch-swapping in 10 random-addition replicates. The MULPARS option was chosen (all minimal trees saved). *Xiphophorus malinche* was designated as the outgroup (Rosen and Bailey, 1963; Meyer and Lydeard, 1993). The integrity of the tree was measured by bootstrapping (Felsenstein, 1985) using a heuristic search as described above and 100 replicates.

Nodes within the tree were compared using the Decay Index (DI; B. D. Mishler, M. J. Donoghue, and V. A. Albert, unpubl.). The DI is the number of steps required to collapse a node in a parsimony analysis (B. D. Mishler, M. J. Donoghue, and V. A. Albert, unpubl. abstract). Successively longer trees were saved during PAUP's heuristic search. The strict consensus of the resultant trees revealed the nodes that had collapsed.

The software package PHYLIP (Felsenstein, 1989) was used to execute a second phylogenetic method, maximum likelihood (ML; Felsenstein, 1985), and a distance-based method, neighbor-joining (NJ; Saitou and Nei, 1987). Parameters specified in the maximum-likelihood analysis (DNAML) included one category of substitution, default parameters, and the designation of *X. malinche* as the outgroup. Tree robustness was inferred from *P*-values calculated for length of branches.

A Kimura two-parameter model (Kimura, 1980) was used in calculating a corrected distance matrix in the DNADIST subroutine and served as the input for the subroutine NEIGHBOR in PHYLIP. Tree robustness was assessed by bootstrapping. One hundred data sets were generated in SEQBOOT, distance matrices were calculated for each data set in DNADIST, the shortest tree for each was found in NEIGHBOR, and the consensus tree was generated by CONSENSE. These three sets of analyses were performed to test whether different results were produced by different phylogenetic methods.

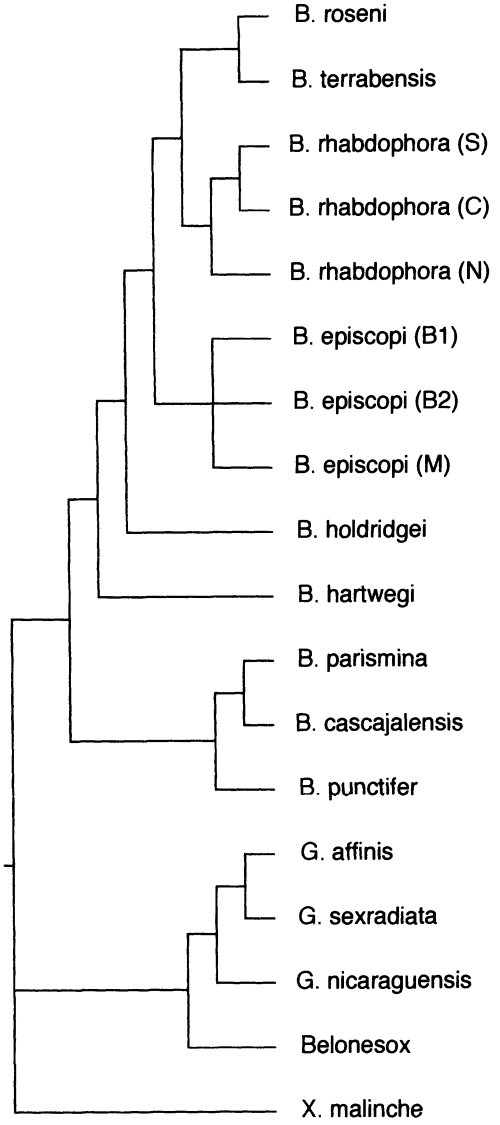
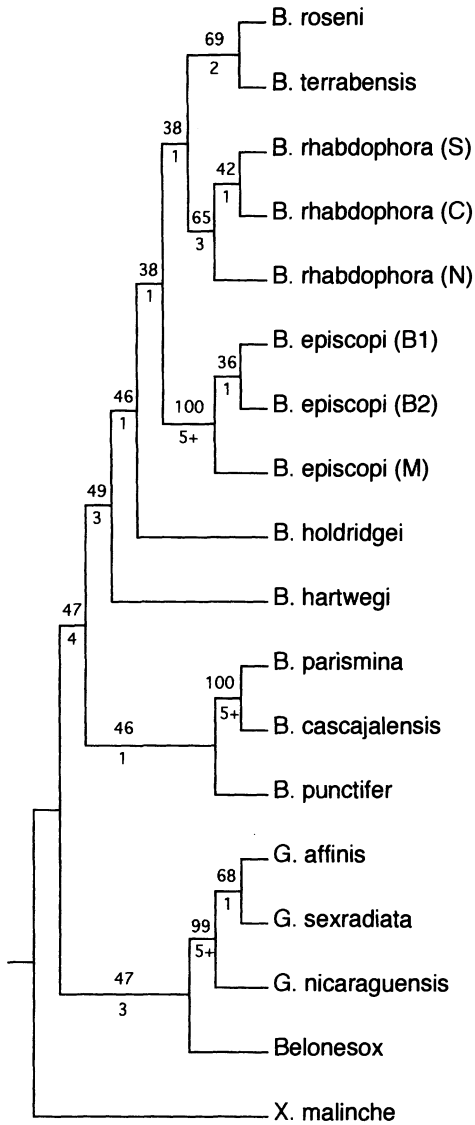


Fig. 1. Maximum-parsimony result. Consensus tree (50% majority-rule) generated in PAUP 3.1.1 (Swofford, 1991, unpubl.). Decay indices are shown below, and bootstrap values (100 replicates) are shown above each internode. Specimens of *Brachyrhaphis episcopi* from Barro Colorado Island, Panama, are denoted B1 and B2. The specimen from the Rio Mendoza is labeled M. Specimens of *B. rhabdophora* from the southern, central, and northern parts of Costa Rica are labeled S, C, and N, respectively.

Fig. 2. Maximum-likelihood result. Tree generated in PHYLIP (Felsenstein, 1989). Nonsignificant branch lengths are collapsed. See Materials and Methods for parameters chosen. Specimens of *Brachyrhaphis episcopi* from Barro Colorado Island, Panama, are denoted B1 and B2. The specimen from the Rio Mendoza is labeled M. Specimens of *B. rhabdophora* from the southern, central, and northern parts of Costa Rica are labeled S, C, and N, respectively.

RESULTS

When these data were analyzed (GenBank accession U68300–12), three shortest trees were found via MP. The three trees differed only in the relationships among the three specimens of

B. episcopi included in this study. The strict-consensus tree shown (Fig. 1) is 415 steps long. Bootstrap values and the DI are given at each node. Seventy-two phylogenetically informative characters were found out of the possible 381. The consistency index for this tree is 0.567. The log of the consistency index is negatively correlated with the number of taxa (Sanderson and

TABLE 1. LOWER-TRIANGLE DISTANCE MATRIX GENERATED BY DNADIST IN PHYLIP (FELSENSTEIN 1989). See Materials and Methods for parameters chosen. Specimens of (*Brachyrhaphis episcopi* from Barro Colorado Island, Panama, are denoted B1 and B2. The specimen from the Rio Mendoza is labeled M. Specimens of *B. rhabdophora* from the southern, central, and northern parts of Costa Rica are labeled S, C, and N, respectively.

	1	2	3	4	5	6	7	8	9
1. <i>B. roseni</i>	*								
2. <i>B. episcopi</i> (B1)	0.1259								
3. <i>B. episcopi</i> (B2)	0.1266	0.0029							
4. <i>B. episcopi</i> (M)	0.1559	0.0266	0.0298						
5. <i>B. holdridgii</i>	0.0843	0.1147	0.1153	0.1440					
6. <i>B. parismina</i>	0.1531	0.1954	0.1965	0.2295	0.1247				
7. <i>B. terrabensis</i>	0.0351	0.1052	0.1058	0.1249	0.0802	0.1455			
8. <i>B. rhabdophora</i> (S)	0.0751	0.1060	0.1066	0.1288	0.1101	0.1756	0.0519		
9. <i>B. rhabdophora</i> (C)	0.0785	0.1209	0.1216	0.1438	0.0995	0.1638	0.0527	0.0302	
10. <i>B. rhabdophora</i> (N)	0.0741	0.1227	0.1269	0.1452	0.0981	0.1652	0.0623	0.0458	0.0522
11. <i>B. cascajalensis</i>	0.1552	0.1793	0.1803	0.2127	0.1430	0.0558	0.1469	0.1503	0.1531
12. <i>B. punctifer</i>	0.2542	0.2504	0.2521	0.2894	0.2534	0.2356	0.2515	0.2486	0.2422
13. <i>B. hartwegi</i>	0.1032	0.1530	0.1579	0.1869	0.1095	0.1579	0.1155	0.1080	0.1206
14. <i>G. affinis</i>	0.1698	0.2076	0.2023	0.2431	0.1831	0.2171	0.1871	0.1835	0.1707
15. <i>G. sexradiata</i>	0.2046	0.2530	0.2546	0.2877	0.2343	0.2558	0.2390	0.2289	0.2239
16. <i>G. nicaraguensis</i>	0.1678	0.2142	0.2155	0.2492	0.1952	0.2004	0.1709	0.1730	0.1717
17. <i>Belonesox</i>	0.2174	0.2560	0.2576	0.2899	0.1957	0.2082	0.2342	0.2558	0.2419
18. <i>X. malinche</i>	0.1560	0.2073	0.2127	0.2344	0.1708	0.1997	0.1674	0.1933	0.1889

Donoghue, 1989; Klassen et al., 1991). The log of 0.567 falls above the regression fitted to number of taxa suggesting that our data set is phylogenetically informative.

Branches of nonsignificant lengths are collapsed in the resultant ML tree (Fig. 2). One polytomy includes the three specimens of *B. episcopi*. The other unresolved node is at the base of the tree. The relationships among *Xiphophorus*, the genus *Brachyrhaphis*, and *Belonesox* + *Gambusia* remain unclear in this analysis. The topology of the rest of the tree is in agreement with that of the MP analysis.

A Kimura two-parameter distance matrix was used in the NJ analysis (Table 1). The resultant tree (Fig. 3) differs from the MP and ML analyses in that the relationship between the designated outgroup and *Belonesox* to *Gambusia* + *Brachyrhaphis* was not resolved; the relationships between the three specimens of *B. episcopi* are supported (bootstrap = 100), but the two specimens from Barro Colorado Island do not fall out as each other's closest relative; and *G. nicaraguensis* is most closely related to *G. sexradiata* instead of *G. affinis* as in both of the other analyses. Otherwise, the topology of the NJ tree matches those of the other two analyses.

The central and southern populations of *B. rhabdophora* were more closely related to each other than either was to the northern Guanaacaste population in all three analyses (MP: bootstrap = 42, DI = 1; ML: $P < 0.01$; NJ: bootstrap = 78). All three analyses support a *B. roseni* + *B. terrabensis* clade (MP: bootstrap = 69, DI = 2; ML: $P < 0.01$; NJ: bootstrap = 78), a *B. parismina* + *B. cascajalensis* clade (MP: bootstrap = 100, DI = 5+; ML: $P < 0.01$; NJ: bootstrap =

100), a *Brachyrhaphis* clade (MP: bootstrap = 49, DI = 3; ML: $P < 0.01$; NJ: bootstrap = 80), and a *Gambusia* clade (MP: bootstrap = 99, DI = 5+; ML: $P < 0.01$; NJ: bootstrap = 100).

DISCUSSION

Monophyly of the genera *Brachyrhaphis* and *Gambusia* is well supported by our data. The monophyly of the tribe Gambusiini with respect to the outgroup taxon, *X. malinche*, is weakly supported and remains somewhat uncertain (Figs. 1–3). This finding is consistent with recent evaluations of cytochrome *b* as a molecular marker (Graybeal, 1993; Meyer, 1994). Graybeal (1993), in particular, found that cytochrome *b* was useful as a phylogenetic marker at the level of species divergences in bufonid frogs. Bootstrap values decrease the more internal the node. This is evidence that, for these fish as for other taxa, cytochrome *b* is most helpful in resolving shallow divergences. A more slowly evolving gene, such as the 16S ribosomal gene, may allow more robust resolution of the internal nodes in future studies (Meyer and Lydeard, 1993; Meyer, 1994).

All results support the monophyly of *Brachyrhaphis* and *Gambusia*. The MP and ML trees are consistent with Rauchenberger's (1989) placement of *G. affinis* and *G. sexradiata* as sister taxa with respect to *G. nicaraguensis*. Lydeard et al. (1995) recently reconstructed the phylogeny of 24 species of *Gambusia* using the same part of the gene as used in this study. Their analysis also failed to resolve the relationships among these three distantly related species. Our data weakly

TABLE 1. EXTENDED.

	10	11	12	13	14	15	16	17
1. <i>B. roseni</i>								
2. <i>B. episcopi</i> (B1)								
3. <i>B. episcopi</i> (B2)								
4. <i>B. episcopi</i> (M)								
5. <i>B. holdridgii</i>								
6. <i>B. parismina</i>								
7. <i>B. terrabensis</i>								
8. <i>B. rhabdophora</i> (S)								
9. <i>B. rhabdophora</i> (C)								
10. <i>B. rhabdophora</i> (N)								
11. <i>B. cascajalensis</i>	0.1632							
12. <i>B. punctifer</i>	0.2525	0.2304						
13. <i>B. hartwegi</i>	0.1179	0.1496	0.2494					
14. <i>G. affinis</i>	0.1683	0.1999		0.3027				
15. <i>G. sexradiata</i>	0.2164	0.2462	0.3664	0.2258	0.1279			
16. <i>G. nicaraguensis</i>	0.1865	0.1970	0.2577	0.1770	0.0968	0.1166		
17. <i>Belonesox</i>	0.2500	0.2161	0.3056	0.1938	0.2076	0.2303	0.1848	
18. <i>X. malinche</i>	0.1700	0.2011	0.3072	0.1852	0.1770	0.2363	0.1932	0.1876

support Rauchenberger's (1989) hypothesis that *Gambusia* and *Belonesox* are sister taxa.

The relationship between *B. roseni* and *B. terrabensis* is convincingly supported. This corroborates our assessment that *B. roseni* is a member of the deep-bodied clade. The relationships between *B. episcopi*, *B. holdridgii*, *B. rhabdophora*, and *B. roseni* + *B. terrabensis*, on the other hand, still seem somewhat unresolved (Figs. 1–3). The monophyly of the clade that includes all of these deep-bodied species when compared with other nodes within the tree has some support (Figs. 1–3). *Brachyrhaphis hartwegi* is basal to this clade. It is not, however, most closely related to *B. terrabensis* as was hypothesized by Rosen and Bailey (1963). The monophyly of the *B. parismina* + *B. cascajalensis* clade (slim-bodied) is strongly supported. These molecular phylogenetic results agree with Rosen and Bailey's (1963) identification of a slim- and deep-bodied clade within this genus.

The data do not support or refute Bussing's claims (1988) that *B. cascajalensis* and *B. parismina* are the same species or that *B. rhabdophora* deserves revision at the species level. The analyses would have refuted the first claim and supported the second only if the species or populations had turned out to be paraphyletic and not monophyletic.

The data are, however, suggestive with respect to the second claim. The percent-sequence differences between the *B. rhabdophora* populations is higher than those for *B. episcopi*; *B. episcopi* from the Rio Mendoza shows a maximum of 2.98% difference with respect to conspecifics from Barro Colorado Island (Table 1). The northern *B. rhabdophora*, when compared with

southern and central populations, showed differences of 4.58% and 5.22%, respectively. The minimum difference between sequences that resulted among species was 5.19% for southern *B. rhabdophora* and *B. terrabensis* (Table 1). This suggests that the central and southern populations, which exhibited a 3.02% sequence difference between one another, may be different with respect to the northern *B. rhabdophora*, as Bussing (1988) hypothesized. A more complete phylogeographic analysis is necessary to resolve this issue.

The phylogenetic trees reported here will facilitate the study of the evolution of the novel behavioral and morphological traits described above. Studies in progress, specifically, focus on the adaptive significance of anal-fin coloration and morphological elaboration. The relationship among sister taxa having different character states is particularly informative to the interpretation of these data. Preliminary results were used in defining the most meaningful taxa for these studies. The distribution of the resultant morphological and behavioral characters on the phylogeny has allowed us (CLM and GWB, unpubl.) to hypothesize the function of these novel features.

Phylogenetic approaches to behavior, morphology, and ecology can take us beyond plausibility arguments by providing refutable hypotheses of evolutionary change in the characters of interest (e.g., Meyer et al., 1994). Phylogenetic trees are necessary for testing these evolutionary hypotheses (Brooks and McLennan, 1991). They can be used to guide research, interpret preliminary data, reveal the need for certain kinds of comparative data or

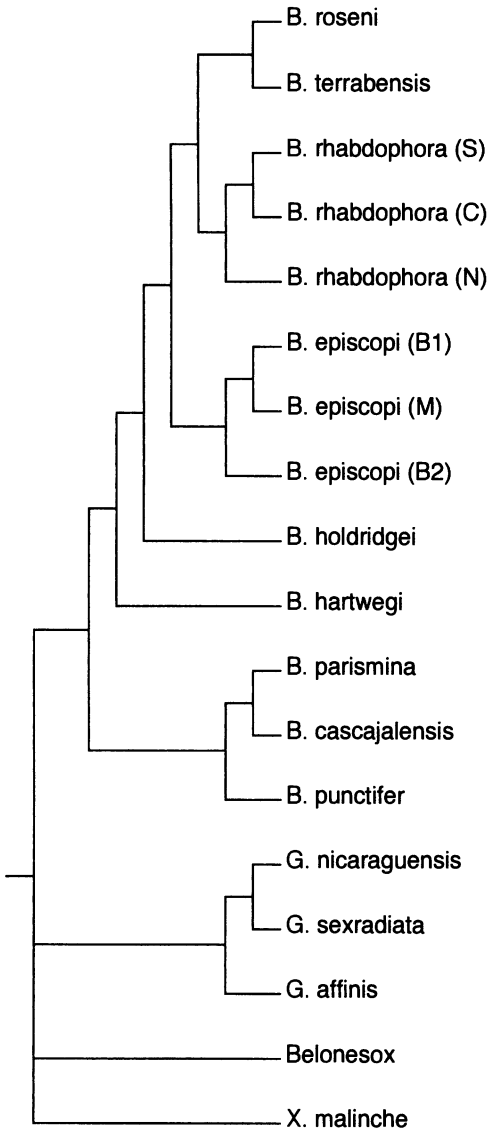


Fig. 3. Neighbor-joining result. Tree generated in PHYLIP (Felsenstein, 1989). See Materials and Methods section for details. Specimens of *Brachyrhaphis episcopi* from Barro Colorado Island, Panama, are denoted B1 and B2. The specimen from the Rio Mendoza is labeled M. Specimens of *B. rhabdophora* from the southern, central, and northern parts of Costa Rica are labeled S, C, and N, respectively.

experiments, and test evolutionary hypotheses once these data have been gathered (Brooks and McLennan, 1991).

ACKNOWLEDGMENTS

C. Orrego provided training and technical support along with K. Le and S. Pak to CLM. K. Le aided in gathering data. J. L. Patton provid-

ed equipment, laboratory resources and space. R. McKeand, M. C. Belk, S. Sung, and A. Basolo provided specimens. Collecting trips and laboratory work by CLM were supported by the Patricia Roberts Harris Fellowship, a Smithsonian 10-week graduate student fellowship, a Raney Award from the American Society of Ichthyologists and Herpetologists, National Science Foundation Grant 910852 to GWB, the Graduate Division (UCB), the Department of Integrative Biology, and Museum of Vertebrate Zoology. Comments on an early version of the manuscript were kindly made by E. Jockusch.

This work received partial support by grants from the National Science Foundation to AM (BSR-9107838 and BSR-9119867) and from a collaboration grant with the Max-Planck-Institut für Biologie in Tübingen from the Max-Planck Society, Germany. This publication was prepared during AM's tenure as Miller Visiting Research Professor at the University of California at Berkeley. The support of the Miller Institute and the hospitality of the Museum of Vertebrate Zoology and the Departments of Integrative Biology and Molecular and Cell Biology are gratefully acknowledged. D. Reznick and an anonymous reviewer provided comments that allowed us to greatly improve the manuscript.

LITERATURE CITED

- BASOLO, A. L. 1995. Phylogenetic evidence for the role of a pre-existing bias in sexual selection. *Proc. R. Soc. Lond. B Biol. Sci.* 259:307–311.
- BROOKS, D. R., AND D. A. MCLENNAN. 1991. *Phylogeny, ecology and behavior: a research program in comparative biology*. Univ. of Chicago Press, Chicago.
- BUSSING, W. A. 1966. New species and new records of Costa Rican freshwater fishes with a tentative list of species. *Rev. Biol. Trop.* 14:205–249.
- . 1988. A new fish, *Brachyrhaphis roseni* (Poeciliidae) from Costa Rica and Panama. *Ibid.* 36:81–87.
- ENDLER, J. A. 1995. Multiple-trait coevolution and environmental gradients in guppies. *Trends Ecol. Evol.* 10:22–29.
- FELSENSTEIN, J. 1985. Evolutionary trees from DNA sequences: a maximum likelihood approach. *J. Mol. Evol.* 17:368–376.
- . 1989. PHYLIP—phylogenetic inference package. *Cladistics* 5:164–166.
- GRAYBEAL, A. 1993. The phylogenetic utility of cytochrome *b* lessons from Bufonid frogs. *Mol. Phyl. Evol.* 2:256–269.
- HOUDE, A. E., AND J. A. ENDLER. 1990. Correlated evolution of female mating preferences and male color pattern in the guppy *Poecilia reticulata*. *Science (Wash.)* 248:1405–1408.
- HUBBS, C. L. 1926. *Studies of the fishes of the order*

- Cyprinodontes. Misc. Publ. Mus. Zool. Univ. Mich. 6:1–87.
- KIMURA, M. 1980. A simple method for estimating evolutionary rates of base substitutions through comparative studies of nucleotide sequences. *J. Mol. Evol.* 16:111–120.
- KLASSEN, G. J., R. D. MOOI, AND A. LOCKE. 1991. Consistency indices and random data. *Syst. Zool.* 40: 446–457.
- KOCHER, T. D., W. K. THOMAS, A. MEYER, S. V. EDWARDS, S. PAABO, F. X. VILLABLANCA, AND A. C. WILSON. 1989. Dynamics of mitochondrial DNA evolution in animals: amplification and sequencing with conserved primers. *Proc. Nat. Acad. Sci.* 86: 6196–6200.
- LYDEARD, C., M. C. WOOTEN, AND A. MEYER. 1995. Cytochrome *b* sequence variation and a molecular phylogeny of the live-bearing fish genus *Gambusia* (Cyprinodontiformes: Poeciliidae). *Can. J. Zool.* 73: 213–227.
- MEEK, S. E. 1912. New species of fishes from Costa Rica. *Publ. Field Columbian Mus., Zool. Ser.* 10:69–75.
- , AND S. F. HILDEBRAND. 1913. New species of fish from Panama. *Publ. Field Mus. Nat. Hist., Zool. Ser.* 10:77–91.
- MEYER, A. 1994. Shortcomings of cytochrome *b* gene as a molecular marker. *TREE* 9:278–280.
- , AND C. LYDEARD. 1993. The evolution of copulatory organs, internal fertilization, placentae, and viviparity of killifishes (Cyprinodontiformes) inferred from a DNA phylogeny of tyrosine kinase gene *X-src*. *Proc. R. Soc. (Lond.)* 254 Ser. B:153–162.
- MORRIS, M. R., M. MUSSEL, AND M. J. RYAN. 1995. Vertical bars on male *Xiphophorus multilineatus*: a signal that deters rival males. *Behav. Ecol.* 6:274–279.
- RAUCHENBERGER, M. 1989. Systematics and biogeography of the genus *Gambusia* (Cyprinodontiformes: Poeciliidae). *Am. Mus. Novit.* 2951:1–74.
- REGAN, C. T. 1907. Diagnoses of new Central American freshwater fishes of the families Cyprinodontidae and Mugilidae. *Ann. Mag. Nat. Hist.* 19, Ser. 7:64–66.
- . 1908. A collection of freshwater fishes made by Mr. C. F. Underwood in Costa Rica. *Mag. Nat. Hist.* 2, Ser. 8:455–464.
- . 1913. A revision of the cyprinodont fishes of the subfamily Poeciliinae. *Proc. Zool. Soc. Lond.* 11:977–1018.
- ROSEN, D. E., AND R. M. BAILEY. 1963. The poeciliid fishes (Cyprinodontiformes), their structure, zoogeography, and systematics. *Bull. Am. Mus. Nat. Hist.* 126:1–176.
- SAITOU, N., AND M. NEI. 1987. The neighbor-joining method: a new method for reconstructing phylogenetic trees. *Mol. Biol. Evol.* 4:406–425.
- SANDERSON, M. J., AND M. J. DONOGHUE. 1989. Patterns of variation in levels of homoplasy. *Evolution* 43:1781–1795.
- SMITH, M. F., AND J. L. PATTON. 1993. The diversification of South American murid rodents: evidence from mitochondrial DNA sequence data for the akodontine tribe. *Biol. J. Linn. Soc.* 50:149–177.
- STEINDACHNER, F. 1878. *Ichthyologische Beiträge (VI)*. *Sitzber. K. Akad. Wiss. Wien, Math. Nat. Cl.* 77: 379–392.
- WALSH, P. S., D. A. METZGER, AND R. HIGUCHI. 1991. Chelex 100 as a medium from simple extraction of DNA for PCR-based typing from forensic material. *BioTechniques* 10:506–513.

(CLM, GWB) DEPARTMENT OF INTEGRATIVE BIOLOGY AND MUSEUM OF VERTEBRATE ZOOLOGY, UNIVERSITY OF CALIFORNIA, BERKELEY, CALIFORNIA 94720; AND (AM) DEPARTMENT OF ECOLOGY AND EVOLUTION AND PROGRAM IN GENETICS, STATE UNIVERSITY OF NEW YORK AT STONY BROOK, STONY BROOK, NEW YORK 11794-5245. Send reprint requests to CLM. Submitted: 30 April 1996. Accepted: 5 Sept. 1996. Section editor: R. Winterbottom.

LINKED CITATIONS

- Page 1 of 1 -



You have printed the following article:

Phylogenetic Relationships of Species of the Genus *Brachyrhaphis* (Poeciliidae) Inferred from Partial Mitochondrial DNA Sequences

Camille L. Mojica; Axel Meyer; George W. Barlow

Copeia, Vol. 1997, No. 2. (May 13, 1997), pp. 298-305.

Stable URL:

<http://links.jstor.org/sici?sici=0045-8511%2819970513%293%3A1997%3A2%3C298%3APROSOT%3E2.0.CO%3B2-V>

This article references the following linked citations. If you are trying to access articles from an off-campus location, you may be required to first logon via your library web site to access JSTOR. Please visit your library's website or contact a librarian to learn about options for remote access to JSTOR.

Literature Cited

Correlated Evolution of Female Mating Preferences and Male Color Patterns in the Guppy *Poecilia reticulata*

Anne E. Houde; John A. Endler

Science, New Series, Vol. 248, No. 4961. (Jun. 15, 1990), pp. 1405-1408.

Stable URL:

<http://links.jstor.org/sici?sici=0036-8075%2819900615%293%3A248%3A4961%3C1405%3ACEOFMP%3E2.0.CO%3B2-7>

Patterns of Variation in Levels of Homoplasy

Michael J. Sanderson; Michael J. Donoghue

Evolution, Vol. 43, No. 8. (Dec., 1989), pp. 1781-1795.

Stable URL:

<http://links.jstor.org/sici?sici=0014-3820%28198912%2943%3A8%3C1781%3APOVILO%3E2.0.CO%3B2-1>